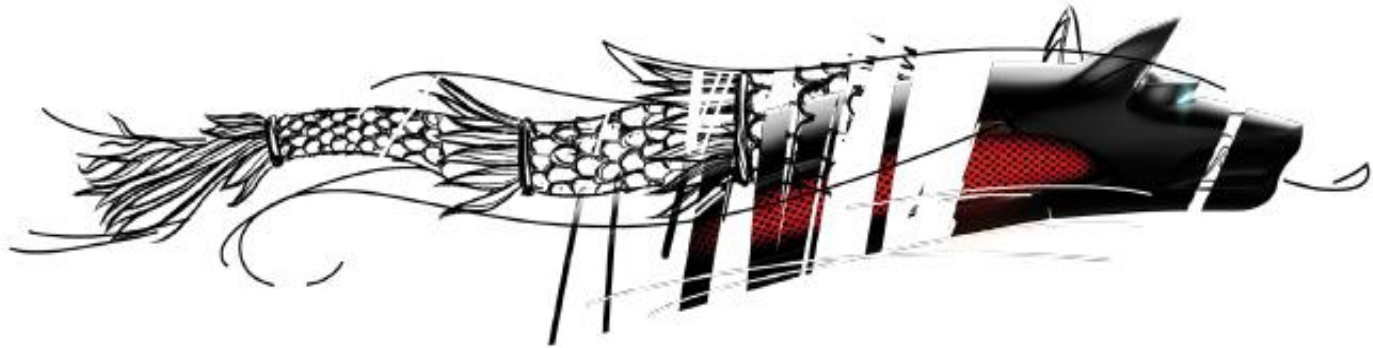




Bitdefender[®]

The New Bitdefender

Half wolf, half dragon.
Half myth, half machine.
This is who we are: the purest and sleekest breed
of digital defenders.



Awake

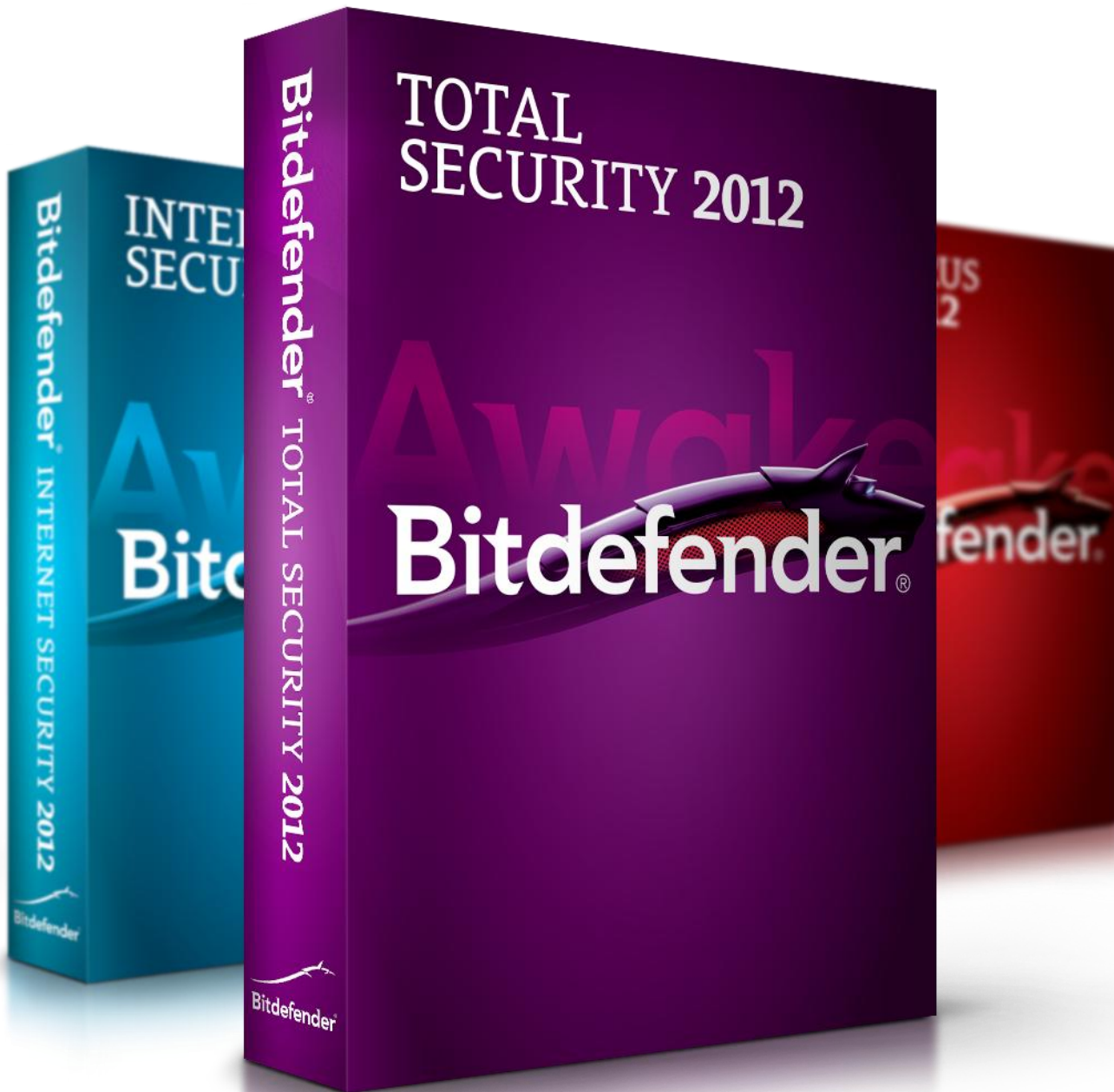
ALWAYS EN GARDE, ALWAYS READY TO STEP IN.

WE ARE THE MIND THAT NEVER SLEEPS, WE
ARE THE EYE THAT SEES IN THE DARK. THIS IS
THE WOLF INSIDE OURSELVES.



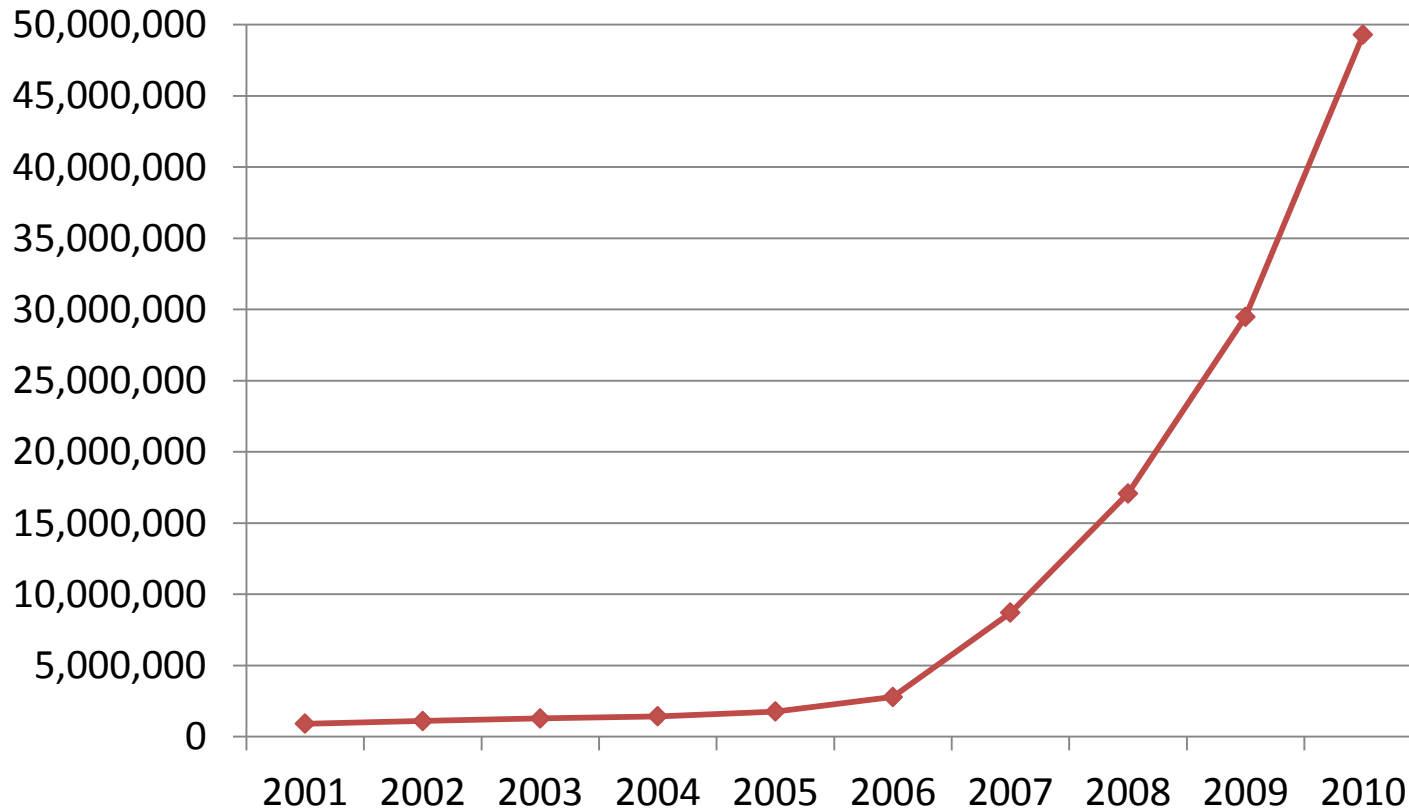
Introducing Bitdefender 2012

Silent Security



Security Landscape

Malware Evolution



AV-Test's Malware Repository (Collection) Statistics
Copyright © 2010 AV-Test GmbH;

Top Awarded Technology



March 2011: Leading German consumer magazine **Stiftung Warentest** voted BitDefender Internet Security Suite 2011 its top product in a test of 17 security suites.



April 2011: **Which?** magazine has awarded BitDefender a “Best Buy” recommendation for two years running.



May 2011: Bitdefender Internet Security 2011 received **ConsumerSearch.com**’s “Best Reviewed” in the Budget Internet Security Software category.

#1 Ranked Antivirus Protection*

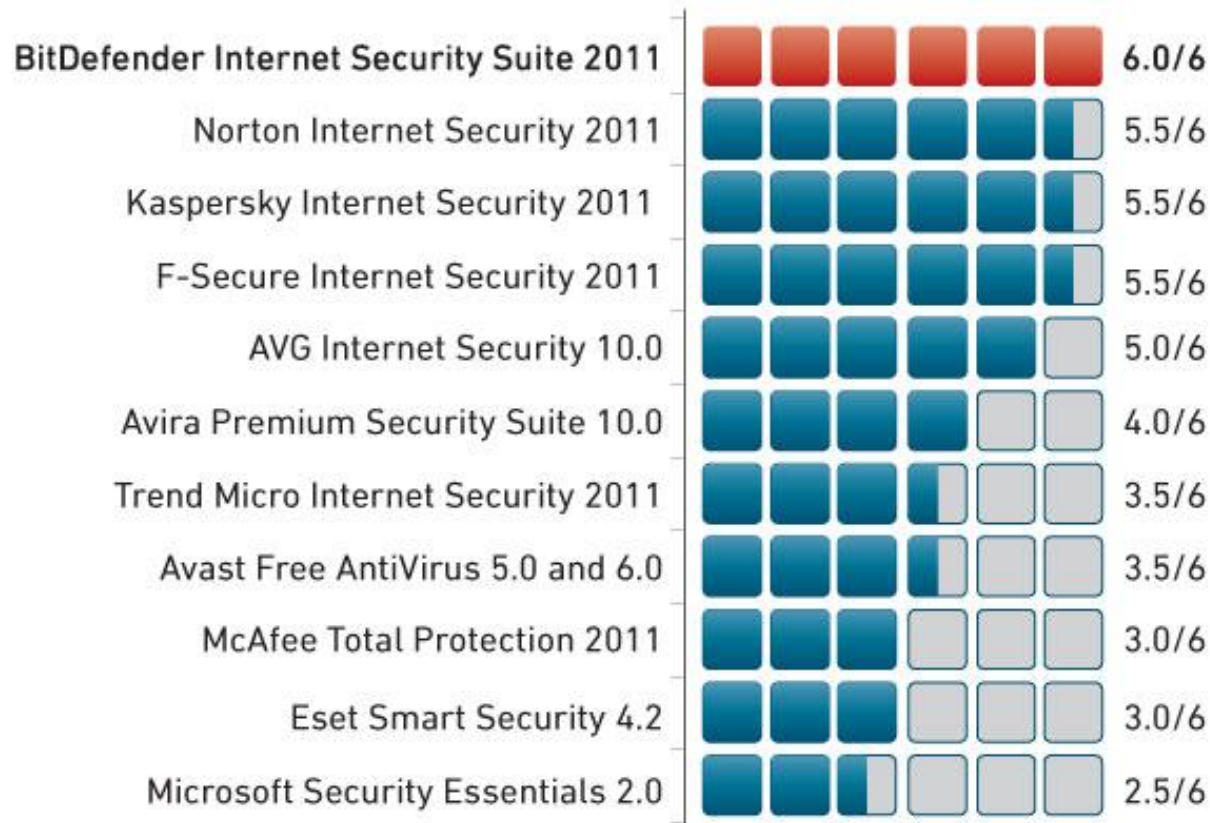
****Protection against malware infections, AV-Test, April 2011***

AV-Test GmbH leading service provider for IT security testing and consultancy services with more than 15 years of experience.

Leader in Antivirus Technology



Protection against malware infections, Q1 2011



AV-Test, April 2011 (<http://www.av-test.org/>)



Product Philosophy

Provide fast and silent security software, using best-of-breed technologies.

The new Bitdefender Total Security 2012 brings unprecedented automation, award-winning e-threat defense as well as data and ID protection to your social and family life online.

Product features

Engage Autopilot for Silent Security

- Autopilot provides a hassle-free experience by making optimal security-related decisions without input from you.
- This means no pop-ups, no alerts, nothing to configure.



A fresh new interface

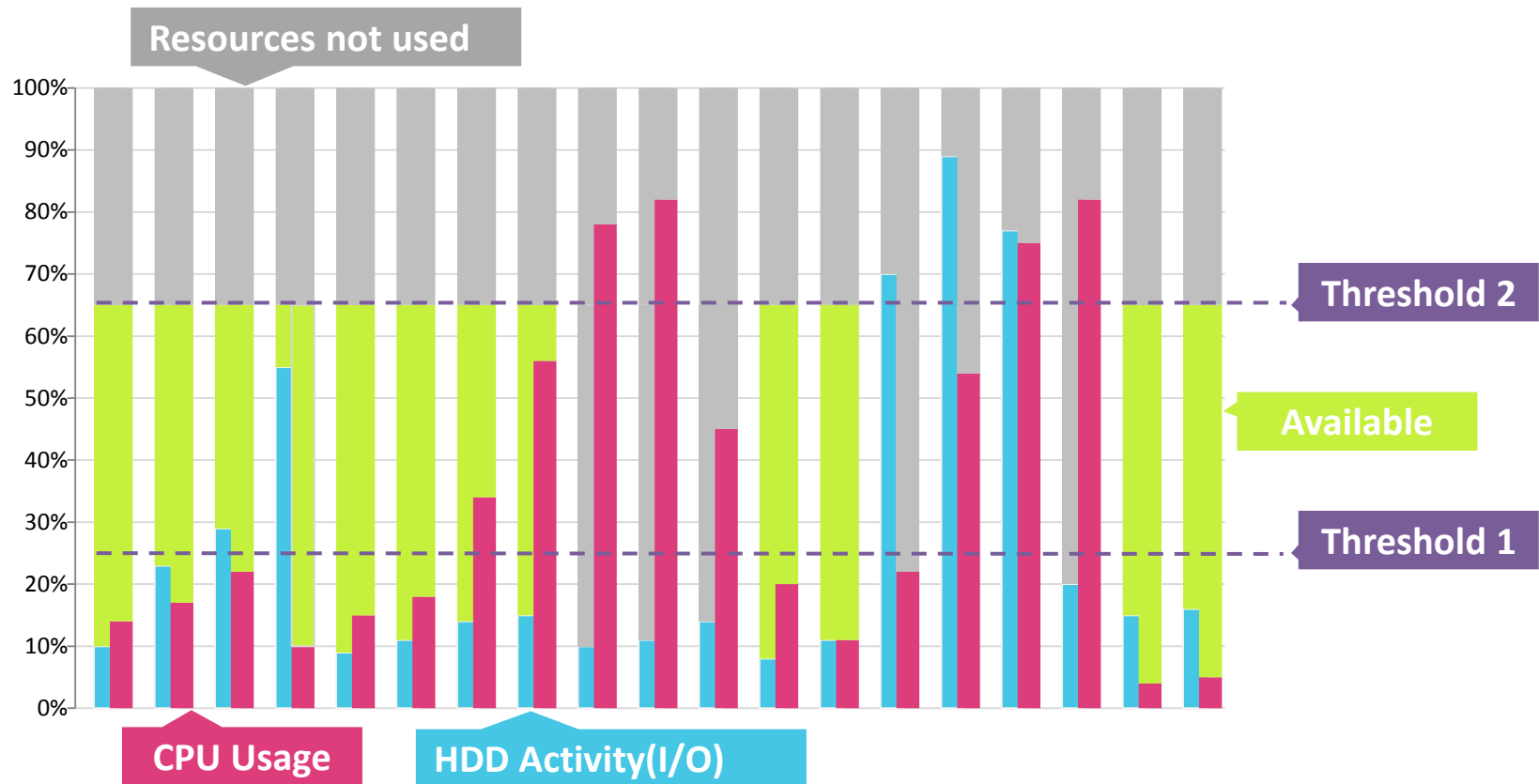


The most good-looking and simplistic GUI I have ever seen

New! **Scan Dispatcher**

- The Scan Dispatcher finds and uses time-slices when system resource usage (CPU and HDD activity) falls below a certain threshold to perform recurring scans of your entire system.
- By only using these slots, Bitdefender does not interfere with user-initiated actions and does not impact system responsiveness.

Scan Dispatcher Logic

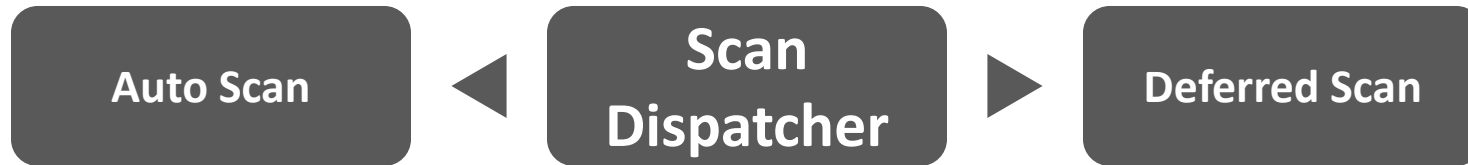


Below Threshold 1 : BitDefender scans everything in the queue

Above Threshold 2: all the files that are accessed in write mode are put in a queue to be scanned when processor utilization is below T1

Files that are accessed in read or execute mode are always scanned.

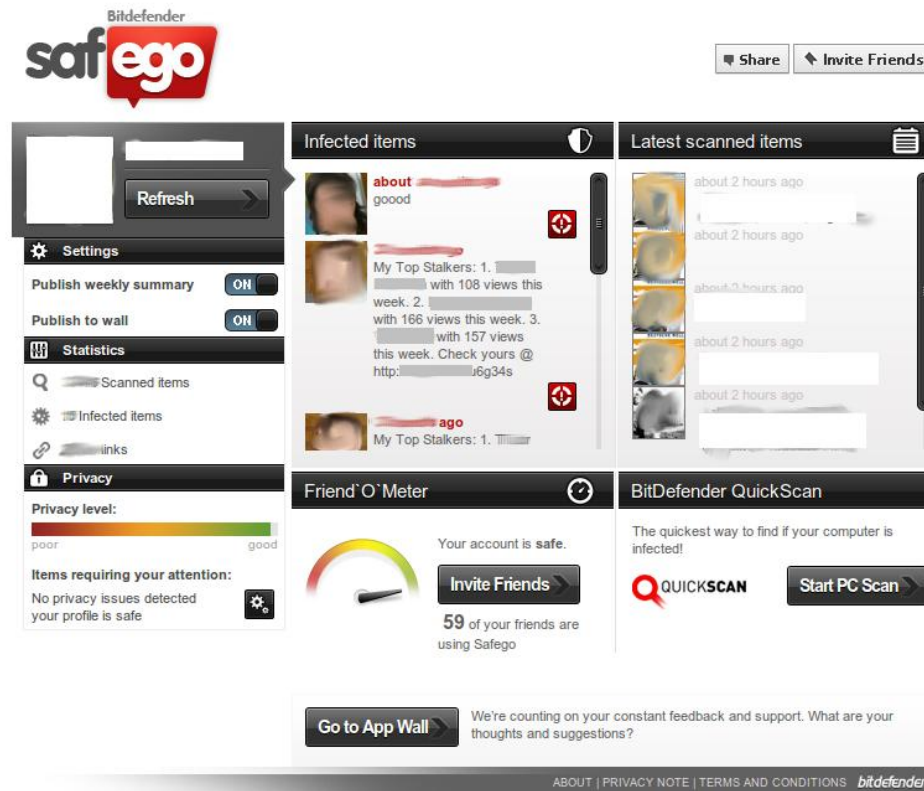
Scan Dispatcher Functionality



- This is a **recurring scan** which only uses available slots
- It has close to zero impact on the system
- By pre-scanning the entire HDD, future on-demand tasks will be completed extremely fast
- On-access scanning will also take significantly less time
- This applies to on-access scanning
- The virus shield can defer scanning for:
 - non critical-actions
 - files that don't pose an immediate threat
- Deferred items are scanned when Available Slots are available

New! Social Networking Protection

- Bitdefender 2012 integrates *Bitdefender safego* to stop social networking specific e-threats by scanning the links you receive from your Facebook and Twitter friends



The screenshot displays the Bitdefender Safego web interface. At the top left is the 'safego' logo. To the right are 'Share' and 'Invite Friends' buttons. The interface is divided into several sections:

- Settings:** Includes a 'Refresh' button, 'Publish weekly summary' (ON), and 'Publish to wall' (ON).
- Statistics:** Lists 'Scanned items', 'Infected items', and 'Links'.
- Privacy:** Shows a 'Privacy level' bar ranging from 'poor' to 'good', with a message: 'No privacy issues detected your profile is safe'.
- Infected items:** A list of items with red warning icons. One item is titled 'My Top Stalkers: 1. [redacted] with 108 views this week. 2. [redacted] with 166 views this week. 3. [redacted] with 157 views this week. Check yours @ http://[redacted]6g34s'.
- Latest scanned items:** A list of items with timestamps 'about 2 hours ago'.
- Friend O' Meter:** A gauge showing 'Your account is safe.' and '59 of your friends are using Safego'. Includes an 'Invite Friends' button.
- BitDefender QuickScan:** A section with a 'Start PC Scan' button and the text: 'The quickest way to find if your computer is infected!'.

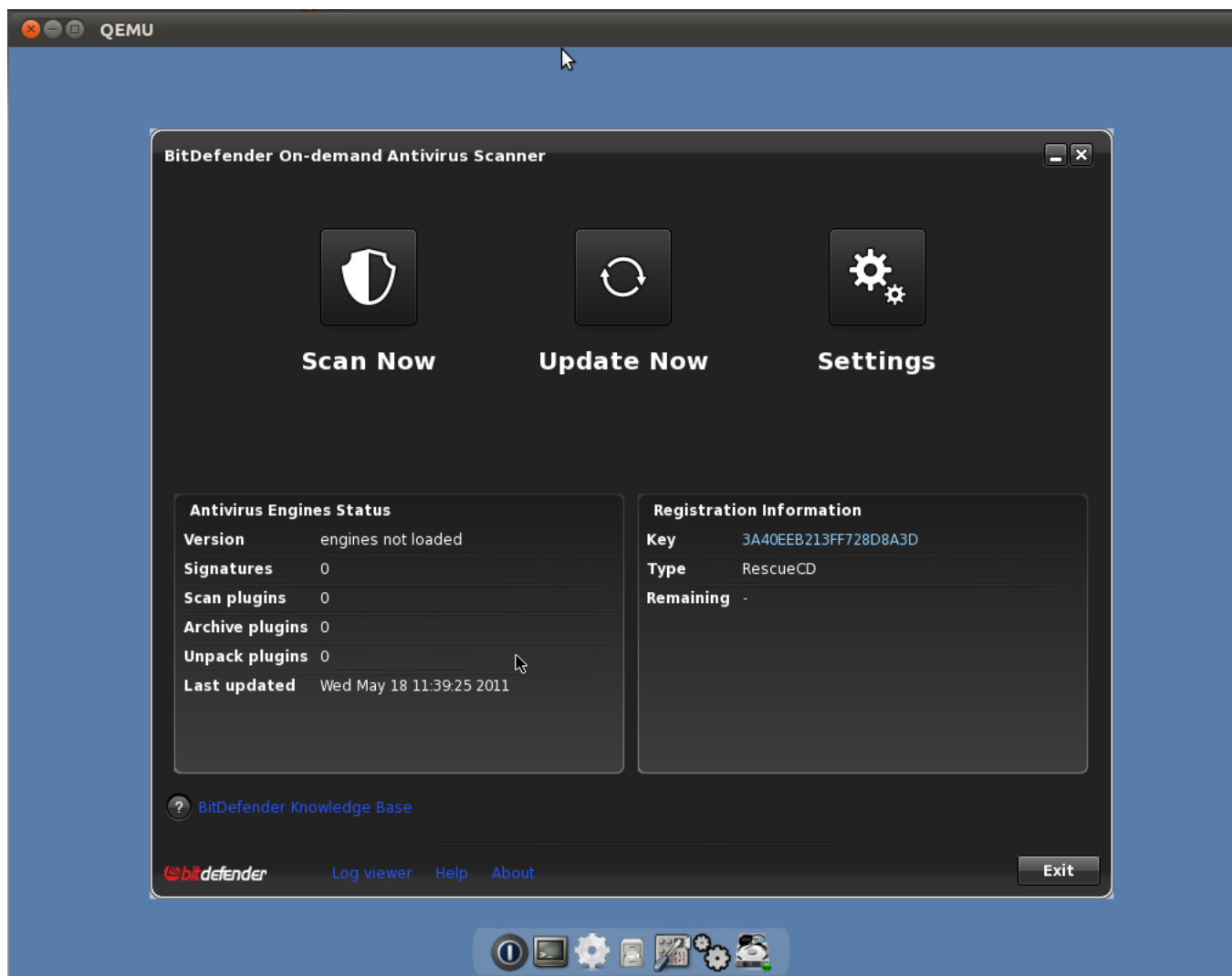
At the bottom, there is a 'Go to App Wall' button and a message: 'We're counting on your constant feedback and support. What are your thoughts and suggestions?'. The footer contains links for 'ABOUT | PRIVACY NOTE | TERMS AND CONDITIONS' and the 'bitdefender' logo.

- *Bitdefender safego* was launched at the end of 2010 and it includes:
 - E-threat protection: it scans the content posted on users' Facebook Wall and News Feed.
 - Privacy protection: it warns users in case their public profile contains private data that can be accessed freely by persons who are not among their contacts.
 - *Friend'O'Meter*: helps users build a safe network of friends whose accounts are protected by Safego.

New! **Rescue Mode**

- Some e-threats, such as certain rootkits, are literally impossible to remove reliably from a live system.
 - Even the Windows Safe Mode can be unreliable, in cases where the e-threat has succeeded in making changes to some system files.
- To address this scenario, BitDefender makes use of **Rescue Mode** - a trusted Linux operating system that is stored on the local drive and started when cleanup and recovery is needed.
- Rescue Mode provides full antivirus functionality, network and hardware auto-configuration.
- It is started by BitDefender (with user permission) when an e-threat that cannot be removed otherwise is found, or can be started by the user, at any time.

Rescue Mode



New! **Virtualized Browsing**

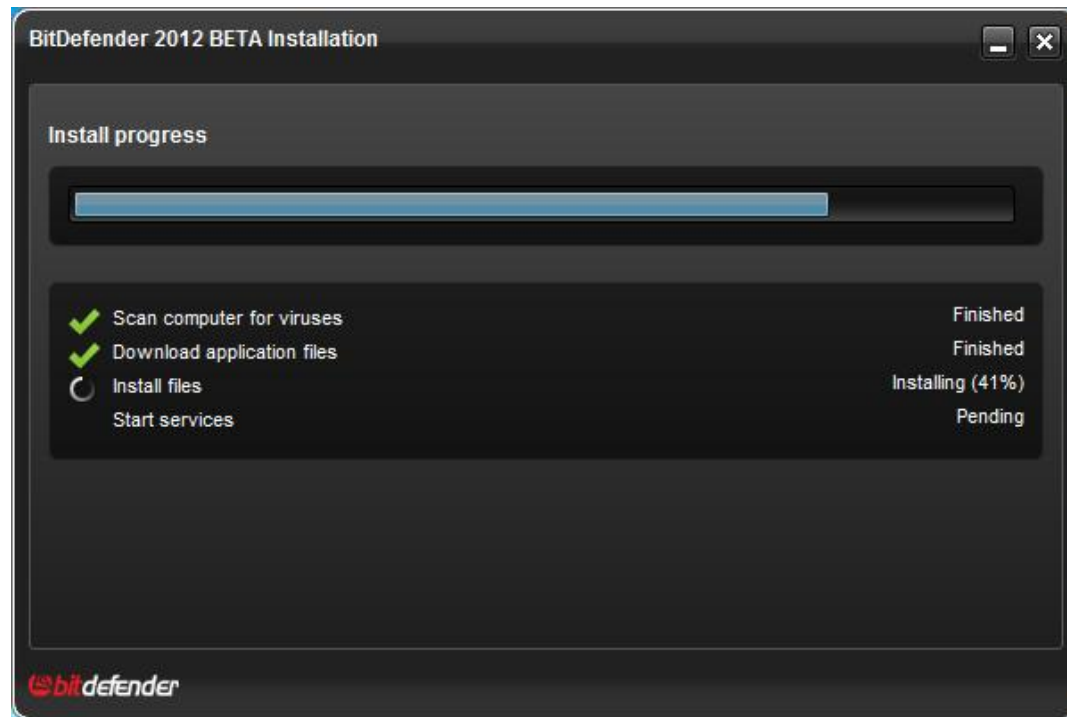
- Launches the browser in a Bitdefender-provided environment, isolating it from the operating system.
- This is done to prevent browser-based e-threats from exploiting browser vulnerabilities to gain control of the entire system.
- For security, this functionality is implemented at the kernel level and the processes are launched with minimal privileges, inside the virtual environment.

New! **Safebox - Online Backup & Sync**

- Bitdefender Safebox monitors your important files and instantly backs them up to a secure remote server whenever a change is detected.
- Backed up files become available to your other computers on which Bitdefender is installed.
- Bitdefender Total Security comes with 2GB of free storage.

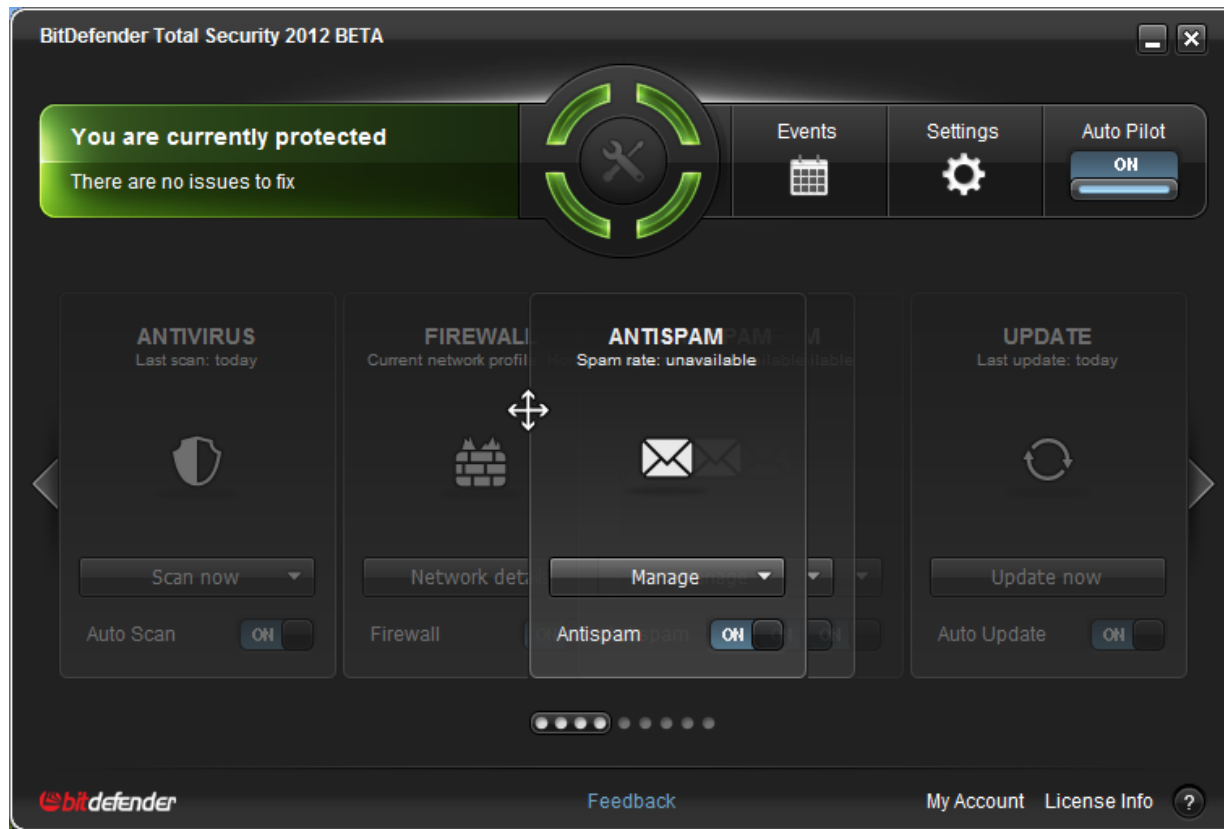
Improved! **Streamlined Installation**

- Bitdefender 2012 easily installs with just a few clicks, and in half the time required by the previous version.



New! Flexible Interface

Drag and drop modules to get quick access to the actions you perform most often directly from the main window.



Bitdefender versus competitors



	BitDefender Total Security 2012	Symantec Norton 360 v5	McAfee Total Protection 2011	Trend Micro Maximum Security	Kaspersky Pure 9.0
Chat Encryption	✓	✗	✗	✗	✗
File Encryption	✓	✗	✓	✓	✗
Rescue Mode	✓	✓	✗	✗	✓
Social Networking Protection	✓	✓	✗	✗	✗
Virtualized Browsing	✓	✗	✗	✗	✓
Antivirus Protection*	6.0/6**	5.5/6	3.0/6	3.5/6	5.5/6

*Protection against malware infections, AV-Test, April 2011

** BitDefender Internet Security 2011

Product Line

Bitdefender 2012 Product Line



	ANTIVIRUS PLUS 2012	INTERNET SECURITY 2012	TOTAL SECURITY 2012
Antivirus & Antispyware	●	●	●
Search Advisor	●	●	●
Antiphishing	●	●	●
Home Network	●	●	●
Antispam		●	●
Firewall		●	●
Parental Control		●	●
File Encryption		-	●
Tune-up			●
Safebox			●

System Requirements

1. Minimum

- Operating system: Microsoft Windows XP SP3 , Vista (SP2), Microsoft Windows 7 (SP1)
- CPU: 800MHz processor
- Memory (RAM):
 - 1 GB
- Available free hard disk space: 1.8 GB free space (at least 800 MB on the system drive)

2. Recommended

- Operating system: Microsoft Windows XP SP3 , Vista (SP2), Microsoft Windows 7 (SP1)
- CPU: Intel CORE Duo (1.66 GHz) or equivalent processor
- Memory (RAM):
 - 1 GB (Microsoft Windows XP)
 - 1.5 GB (Microsoft Windows Vista and Microsoft Windows 7)
- Available free hard disk space: 2.8 GB free space (at least 800 MB on system drive)



Bitdefender[®]